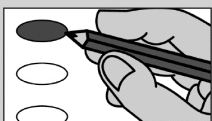


TOWN OF GLOCESTER
FINANCIAL TOWN REFERENDUM
TUESDAY, MAY 21, 2024



To mark your choice
Fill in the oval to the left of
your choice.
Do not make any marks
outside of the oval.

Question #1:

Shall the Town Budget for fiscal year 2024/25 appropriate a sum of **\$34,181,062** which includes Municipal Services & Capital Expenses; Gloucester School Dept. Operating & Capital Expenses; Gloucester's share of the Foster/Glocester Regional Operating & Capital Expenses; and includes a Levy of Property Tax (not including Motor Vehicle taxes) of not less than **\$25,095,097** or more than **\$26,098,900**?

- Yes
- No

Question #2:

Shall the Town Budget include an appropriation of **\$88,349** from the surplus, for capital expenses?

This appropriation will come from existing surplus and will not increase the amount to be raised by taxes.

- Yes
- No

Question #3:

Shall the Town Budget include an appropriation of **\$30,000** from the surplus, for Grant Matching funds?

This appropriation will come from existing surplus and will not increase the amount to be raised by taxes.

- Yes
- No

Question# 4:

Shall the Town Budget include an appropriation of **\$100,000** from the surplus, for future operational expenses of Gloucester Public Schools?

This appropriation will come from existing surplus and will not increase the amount to be raised by taxes.

- Yes
- No